



# The Pacific Pipeline

The Monthly Newsletter of Pacific Pump and Power

Rental • Sales • Service • Operations

August 2019

License# C-32223



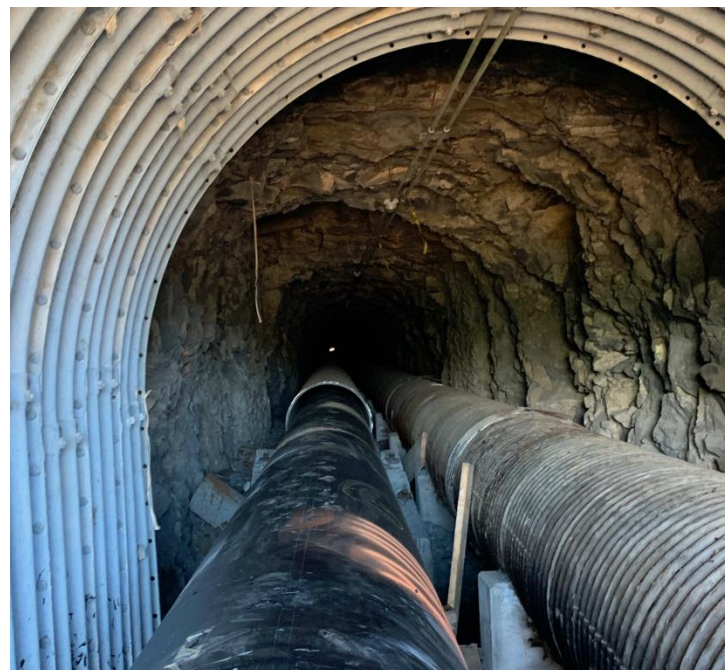
## Large Diameter Pipe Fusion

Pacific Pump & Power did a project earlier this year installing a 30" DIPS DR9 HDPE Waterline! This pipe was installed inside of an existing steel pipeline that it just barely fit in so the fusion needed to be in perfect alignment. The outside bead needed to be removed and there was zero room for failure. Our technician, Kamaka, is one of the few local technicians who is qualified to fuse pipe this large and he had a flawless performance.

To ensure precision, we used a data logger to track the machine's pressure on each joint which created a graphical representation of exactly how each joint was fused together.

If you need assistance with sewer bypasses, compressed air, pumps, power, fusion, pipe plugs, service or operations, please call us at 808-672-8198 or email [Sales@PacificPumpandPower.com](mailto:Sales@PacificPumpandPower.com)

Check us out on the web at [www.PacificPumpandPower.com](http://www.PacificPumpandPower.com)



Call today at 672-8198 or visit us at Campbell Industrial: 91-503 Nukuawa Street, Kapolei



# The Pacific Pipeline

The Monthly Newsletter of Pacific Pump and Power

August 2019

Rental • Sales • Service • Operations

License# C-32223

Pump Type	Quantity	Pump Model and Description
<b>Oahu Yard</b>		
Godwin Dri-Prime CD Series Pumps, High Volume, Medium Head, Large Solids-Handling Capabilities	46 AVAILABLE	<ul style="list-style-type: none"> <li>• DPC300 12" Diesel, up to 5000 gpm or up to 115' of head</li> <li>• DPC300 12" Electric, up to 4000 gpm or up to 115' of head</li> <li>• CD2258" Diesel, up to 3100gpm or up to 183' of head</li> <li>• CD2258" Electric, up to 3100gpm or up to 175' of head</li> <li>• CD150M6" Diesel, up to 1700 gpm or up to 160' of head</li> <li>• CD103M4" Diesel, up to 1000 gpm or up to 170' of head</li> <li>• CD100M4" Diesel, up to 750 gpm, or up to 115' of head</li> </ul>
Godwin HL Series, High Head Pumps with Solids-Handling Capabilities	7 AVAILABLE	<ul style="list-style-type: none"> <li>• HL150M6" Diesel, up to 1450 gpm or up to 500' of head</li> <li>• HL80M, 3" Diesel, up to 450 gpm or up to 325' of head</li> </ul>
Godwin Heidra Hydraulic Submersibles	9 AVAILABLE	<ul style="list-style-type: none"> <li>• HS150VSG 6", Diesel, up to 1600 gpm or up to 160' of head</li> <li>• HS150V 6", Diesel, up to 1600 gpm or up to 160' of head</li> <li>• HS100TD 4", Diesel, up to 800 gpm or up to 130' of head</li> <li>• HS80HH3", Diesel, up to 420 gpm or up to 125' of head</li> </ul>
Electric Submersibles	50 AVAILABLE	<ul style="list-style-type: none"> <li>• Godwin GSP600SV, 8", up to 3650 gpm or up to 82' of head</li> <li>• Godwin GSP160HV, 6", up to 1200 gpm or up to 115' of head</li> <li>• Godwin GSP55, 4", up to 550 gpm or up to 75' of head</li> <li>• StancorSSS-100, 2" Stainless, 100 gpm or up to 60' of head</li> <li>• StancorSSS-75, 2" Stainless, 80 gpm or up to 40' of head</li> <li>• StancorSV-50, 2" Stainless, 80 gpm or up to 40' of head</li> <li>• StancorSV-100 2" Stainless, 110 gpm or up to 50' of head</li> <li>• StancorSSD-200, 3" Stainless, 180 gpm or up to 55' of head</li> <li>• StancorSEW-75, 2" Stainless, 95 gpm or up to 9' of head</li> <li>• StancorSEW-100, 2" Stainless, 111 gpm or up to 35' of head</li> <li>• StancorSEW-200, 2" Stainless, 190 gpm or up to 52' of head</li> <li>• Flygt 2740 SS sludge series 244HT, 210 gpm or up to 80' of head</li> </ul>
Wet-Prime Gas Trash Pumps	22 AVAILABLE	<ul style="list-style-type: none"> <li>• WT40X 4" up to 430 gpm or up to 92' of head</li> <li>• GPP 50HX 2" Wet Prime Pressure GX160</li> <li>• Godwin GTP50HX 2" up to 185 gpm or up to 98' of head</li> <li>• Godwin GTP80HX, 3" up to 355 gpm or up to 90' of head</li> <li>• Godwin GTP100HX, 4" up to 430 gpm or up to 92' of head</li> </ul>
Versamatic Diaphragm Pumps	12 AVAILABLE	<ul style="list-style-type: none"> <li>• Versamatic Air Operated E3, 3", up to 260 gpm</li> <li>• Versamatic Air Operated E2, 2", up to 155 gpm</li> <li>• Versamatic Air Operated E1, 1", up to 46 gpm</li> </ul>
Hydrostatic Test Pumps and Wheel Kit	1 AVAILABLE	<ul style="list-style-type: none"> <li>• Rice TR8H – Honda 13 HP, 389CC gasoline engine</li> </ul>
Flow Meter	1 AVAILABLE	<ul style="list-style-type: none"> <li>• 12" M0300 Bolt on Saddle Flow Meter</li> </ul>
Power Diesel Generator Sets	5 AVAILABLE	<ul style="list-style-type: none"> <li>• Godwin 26kW-R Series, Critically Silenced</li> <li>• 125kVA MultiQuip WhisperWatt</li> <li>• Kubota 10kw</li> <li>• Atlas Copco 25 kva</li> <li>• Atlas Copco 330 kva</li> </ul>
Gasoline Generator Sets	3 AVAILABLE	<ul style="list-style-type: none"> <li>• 3000 &amp; 2000 Watt, Portable Honda Quiet Model</li> <li>• Generac Generator 10,000 Watt</li> </ul>
Godwin Portable Light Towers	3 AVAILABLE	<ul style="list-style-type: none"> <li>• GLT 416, 4000 Watts, Coverage of 5-7 acres</li> </ul>
Road Ramp Crossings	7 AVAILABLE	<ul style="list-style-type: none"> <li>• 6", 8" and 12" Road Ramps Crossings</li> </ul>
Air Compressor	8 AVAILABLE	<ul style="list-style-type: none"> <li>• 185cfm, 250cfm, 400cfm, 750cfm</li> </ul>
Hydraulic Hoses	2,300 FEET	<ul style="list-style-type: none"> <li>• 1/4", 1/2", 3/4" and 1" Hydraulic Hose with Couplers</li> </ul>
Heavy Duty Hoses	14,512 FEET	<ul style="list-style-type: none"> <li>• 2", 3", 4", 6", 8", and 12" Heavy Duty Suction and Discharge</li> <li>• Hose Available with Quick Disconnect Fittings</li> </ul>
Bauer Light Weight, Quick Disconnect Pipe	5,795 FEET	<ul style="list-style-type: none"> <li>• 4", 6", 8", and 12" Bauer Light Weight Quick Disconnect Pipe in 10' and 20' Lengths</li> </ul>
Pump Accessories	4,000 IN STOCK	<ul style="list-style-type: none"> <li>• Bauer and Camlock Fittings from 2-12" Available</li> </ul>
HDPE Pipes and Fittings	23,317 FEET	<ul style="list-style-type: none"> <li>• 18" DR26 and 18" DR 32.5 HDPE Pipe</li> <li>• 12" DR11 HDPE Pipe</li> <li>□ 2", 3", 4", 6", 8", 10, 12", 14" 18", 24" HDPE Fittings</li> </ul>
Pump Parts	1,600 IN STOCK	<ul style="list-style-type: none"> <li>• Common Wear Parts for all Pumps Already in Stock</li> </ul>
Pipe Plugs	161 AVAILABLE	<ul style="list-style-type: none"> <li>□ 4-8", 6", 8-12", 12-18", 18-24", 15-30", 24-36" and 24-42", 24-48", 84" with Protective Sleeves and Poly-Lift Line Inflators</li> </ul>
McElroy Fusion Machines	11 AVAILABLE	<ul style="list-style-type: none"> <li>• T900 fuses 12-36" HDPE</li> <li>• T500 II fuses 6-20" HDPE, Rolling 618 fuses 6-18" HDPE, Rolling 28 fuses 2-8" HDPE</li> <li>• PitBull 26 fuses 2-6" HDPE, 2LC fuses 1/2-2", Pitbull 14 fuses 1-4"</li> </ul>
McElroy Parts	145 IN STOCK	<ul style="list-style-type: none"> <li>• Assorted parts and inserts</li> </ul>
<b>Maui Yard</b>		
Bauer Light Weight, Quick Disconnect Pipe	410 FEET	<ul style="list-style-type: none"> <li>• 6" Bauer Light Weight Quick Disconnect Pipe in 10' and 20' Lengths</li> <li>• 8" Bauer Light Weight Quick Disconnect Pipe in 10' and 20' Lengths</li> </ul>
Heavy Duty Hoses	120 FEET	<ul style="list-style-type: none"> <li>• 6" Heavy Duty Suction Hoses Available with Quick Disconnect Fittings</li> </ul>
Road Ramp Crossings	1 AVAILABLE	<ul style="list-style-type: none"> <li>• 6" Road ramp crossing</li> </ul>
Gasoline Generator Sets	1 AVAILABLE	<ul style="list-style-type: none"> <li>• 2000 Watt, Portable Honda Quiet Model</li> </ul>

Atlas Copco

godwin  
a xylem brand

FLYGT  
a xylem brand



The Pacific Pump and Power Team: Kimo, Kellie, Rhussell, Kristin, A'alona, Reid, Eric, Arlo, Tito, Paul, Francisco and Kamaka

McELROY

ansas

CHERNE

VERSA-MATIC

Call today at 672-8198 or visit us at Campbell Industrial: 91-503 Nukuawa Street, Kapolei